

CUKUROVA

Makina İmalat ve Ticaret A.Ş.



888 XG

BACKHOE LOADER



**SUPER
HERO!**



5
YEARS
STRUCTURAL INTEGRITY
WARRANTY

2
YEARS
POWERTRAIN GROUP
WARRANTY



POWER



FEATURES



Engine

Powered with PERKINS turbocharged diesel engine which offers world-class performance and complies with all relevant environmental regulations.

Optimum Weight Distribution

The new generation Cukurova Backhoe Loaders are designed to have Optimum Weight Distribution giving safe, stable steering on the road and provides a solid digging platform.

Improved Performance

The new generation CUKUROVA 888XG model Backhoe Loaders is the ideal combination of concentrated power, safety and extreme user-friendliness. Cukurova was one of the pioneers in using new generation control system for backhoe loaders. This system of hydraulic operated joystick controls, for both backhoe and loader attachments enable operators to spend less effort with much greater precision of movement during work time. This system provides better controllability, maintains motion under any loading process, takes the strain from the operator; increases oil life and reduces oil reservoir temperature.



FEATURES



Roomy Rops / Fops Cab

- Specially designed ergonomic 6 post ROPS/FOPS cab provides perfect operating comfort, excellent visibility, and reliability.
- Full-opening of light rear side windows, partial and full-opening of the doors provide superior fresh air circulation in the cab, tinted safety glass and rear view mirrors improves visibility and sun visor protects operator against strong sunlight and ensures clear vision.
- Front and side control panels are fully equipped with the latest user friendly technology, the arrangement of controls are within easy reach, the audible and visual warning on main function guide operator for failure and adjustable steering column as standard gives extra driving comfort to the operator.
- Cooling box located to left hand trim All relay and fuses located one location for easy serviceability Insulated, metal-reinforced thick floor mat. Powerful HVAC unit supported with air duct.
- Folding and ergonomic steps with full-length handles provide easy and secure access to the cabin. Partially opening doors for operator comfort.
- Phone pocket, USB charger, power socket, and beacon lamp holder located on the right console, two cup holders located on the left console and storage pockets located on the front console to ease of use for the operator

MODERN



FEATURES



Seat

Easy swivel adjustment by locking in two position (front and rear) without holding the lever.

- With larger front and rear sliding stroke
- Controls with picturized communication
- Low backrest for better visibility
- Mechanical suspension
- Backrest support
- Headrest
- Weight and height adjustment
- Adjustable armrest



Front Display



Combined Display Panel

Combined panel of gauges and lights, black&grey background with symbols integrated.

- Km/h for carraro transmissions
- TFT Display
- USB Charger and Power Socket
- High IP protection against water and dust

Automatic return to dig system

The 888XG provides you with automatic return to dig system as standard to get max efficiency with reduced cycle times by leveling the loader bucket back to dig position with a push of loader joystick.

Knob - Loader with switches:

- 6 in 1/Combo bucket switch
- Differential lock
- Transmission disengage

Side Display



FEATURES



BACKHOE JOYSTICK CONTROL

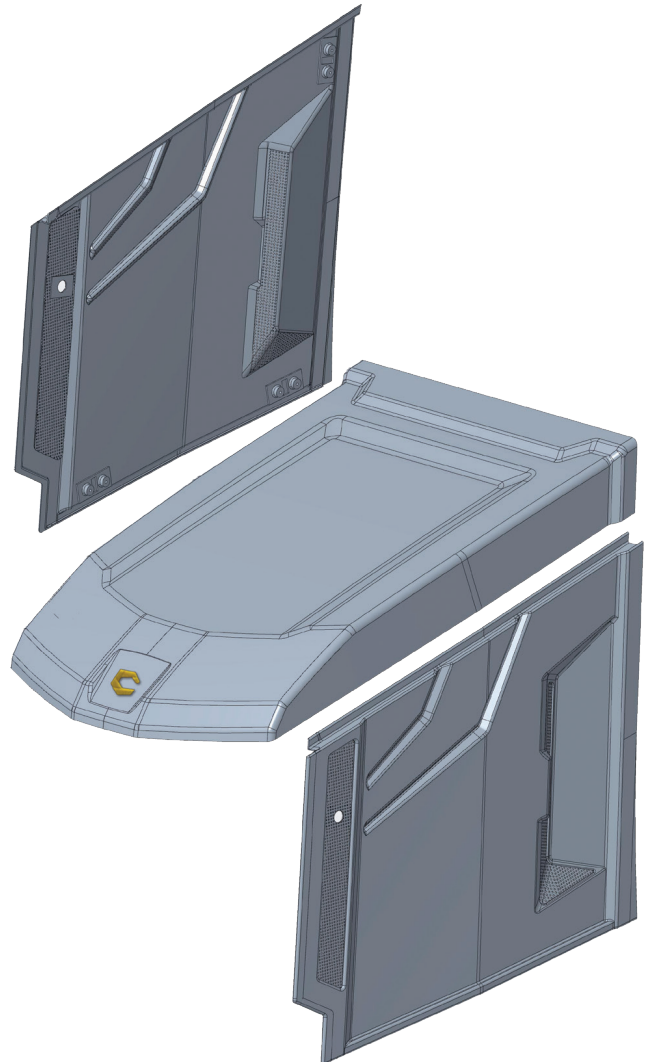
For backhoe, CUKUROVA 888XG offers an extra operating comfort by assembling the hydraulic joysticks on separately adjustable backhoe joystick columns placed at the right-left side of the cab. This innovation surpasses the operator's expectations by allowing him to place the stands in the working position and still take up extra space in the cab. In this way, all the tools are close at hand and work is more ergonomic. To ensure operator comfort and safety, joysticks are equipped with horn and single pump/power buttons.



Serviceability

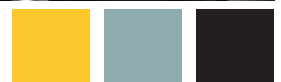
Three-pieces engine hood

Aerodynamic hood design provides operator to access all the necessary maintenance points easily and quickly thus spending less time and effort.



Cool Box

Keeps beverages at the current temperature and cools them if machine equipped with AC.



TECHNICAL SPECIFICATIONS



Engine

- Heavy duty desing, high torque capability, powerful PERKINS engine.
- Impressive low speed torque to deliver improved machine response.
- ECC filtration system provides high quality construction with a re-usable canister, a disposable inner element and a simpler service process.
- Low fuel consumption and low maintenance cost.
- Environmentally friendly to use.
- Dry type air cleaner with primary and safety elements.



Engine		
Make	Perkins	
	Stage II	Stage V
Model	1104C-44T	904J-E36TA
Type	4 stroke diesel, turbo charged	
Rated Power	100hp/74,5 kW	
Rated Speed	2200rpm	2200rpm
Displacement	4,4 L.	3,6 L.
Bore and Stroke	105x127 mm	98*120 mm
No of Cylinders	4	
Max. Torque	408 Nm	430 Nm
Cooling	Water cooled engine oil radiator.	

System Type	Open Center
Hydraulic Pump	Tandem Gear Pump
Max. Flow	154 l/min (Gear Pump)
Max. Press.	235 bar
Hydraulic oil filter	Full flow filer in return and suction line with integrated fine filter area
Hydraulic oil cooler	Hydraulic and transmission oil cooler



TECHNICAL SPECIFICATIONS



Turning Circle(without brakes)	4x4 Mod	4x4x4 Mod
Outer Front Tire Clearance	15600 mm	9485 mm
Outer Loader Bucket Clearance	17000 mm	11400 mm

Hydraulic System	
Backhoe Controls	Joystick Control
Loader control	Joystick Control

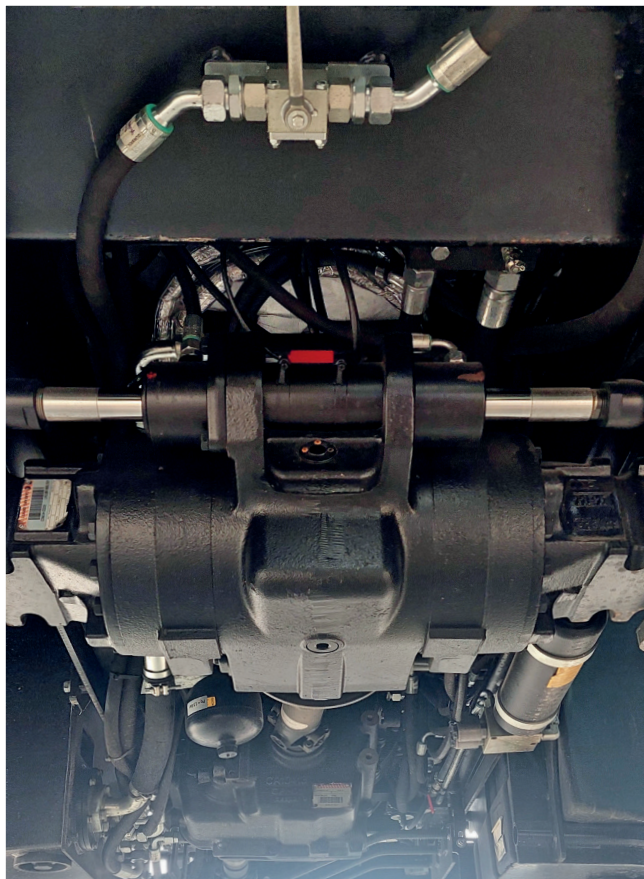
Hydraulic Control System

- Threaded head type cylinder design with all sealed pins and bushings for easy maintenance and long life.
- Cushioned swing, boom and stick cylinders provides maximum operator comfort for fast and smooth trenching.

Axles:

Carraro Axles

- 4WD is engaged by the switch on right instrument panel.
- 4WD can be engaged in all applications; load and carry, roading, in any gear forward or reverse.
- Outboard planetary reduction gears.
- Electro-hydraulic operated differential %100 locking acts an rear axle.
- 16° total oscillation on front axle
- 52 degrees steering angle for perfect maneuverability.



Electrical System	Stage II	Stage V
Starter	3,2 kW	4,0 kW
Electrical	12 / 120 V / Ah	

Drive Train

- 4 Wheel drive
- Carraro automatic powershift transmission
- Low noise and low internal speeds

Make	Carraro
Type	Automatic Powershift
Transmission disconnect	With push button and brake system
Travel Speeds	
1st (foward/reverse)	5,97 / 5,97 km/h
2nd (foward reverse)	9,60 / 9,60 km/h
3rd (foward/reverse)	21,20 / 21,20 km/h
4th (foward/reverse)	40,00 / 40,00 km/h

Transmission

- Choice of 4-speed automatic powershift transmissions are featured for different models for applications that require numerous directional changes at the work site. Gearshifts are smooth and precise and help maximise fuel efficiency.



TECHNICAL SPECIFICATIONS



Steering:

- Electrical controlled 3 different steering modes
- 2-wheel front steering for road drive
 - 4-wheel steering for tight turns
 - 4-wheel "crab" steering for close - to wall dipping and ditch closing
 - Hydrostatic power steering.
 - Load sensing system.

Brakes:

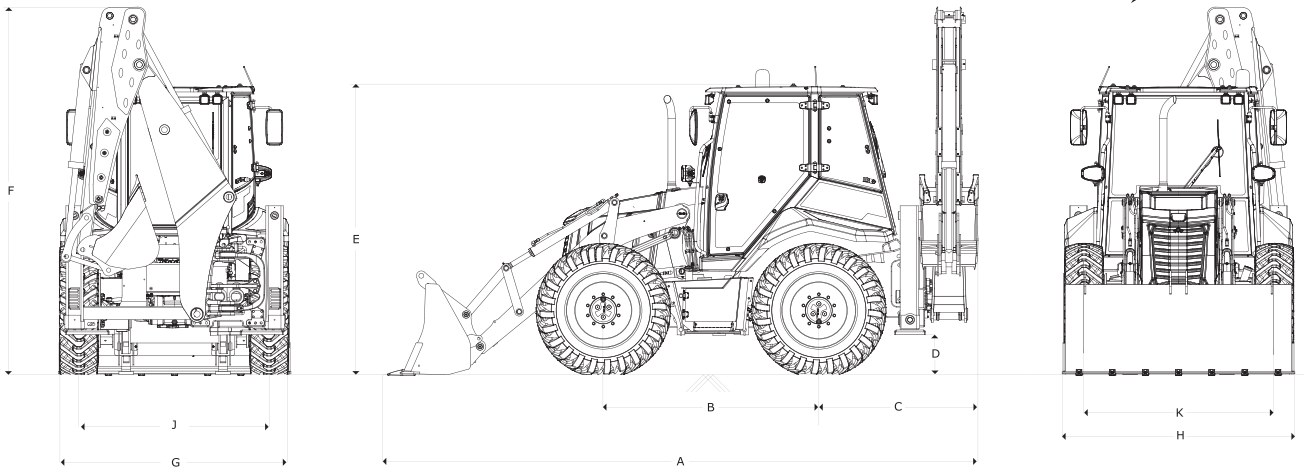
- Hydraulically foot operated service brake two pedals acted on four wheels.

Tyres	
Front	16,9-28
Rear	16,9-28
Loader Attachment	
Shovel Capacity	1,1 m ³
Breakout Force Lift	56,1 kN
Breakout Force Shovel	81,6 kN
Shovel Width	2400 mm
Lift to full height	3178 kg
Backhoe Attachment	
Max. Bucket Breakout	63,9 kN
Retracted Dipper Breakout	30,54 kN
Extended Dipper Breakout	22,61 kN

Brakes	
Service Type	Hydraulic Wet Multi-disc
Parking Type	Mechanical control on rear axle
Weights	
Operating Weight	8700-9750kg
Capacities	
Engine Oil	Stage V/11,6 - Stage II/8,4
Transmission Oil	19,0
Cooling System	25,0
Fuel Tank	164,0
Hydraulic Tank	75,0
Hydraulic System	130,0
Front Axle	11,5
Rear Axle	16,0
Adblue (Stage V)	19,0



TECHNICAL SPECIFICATIONS

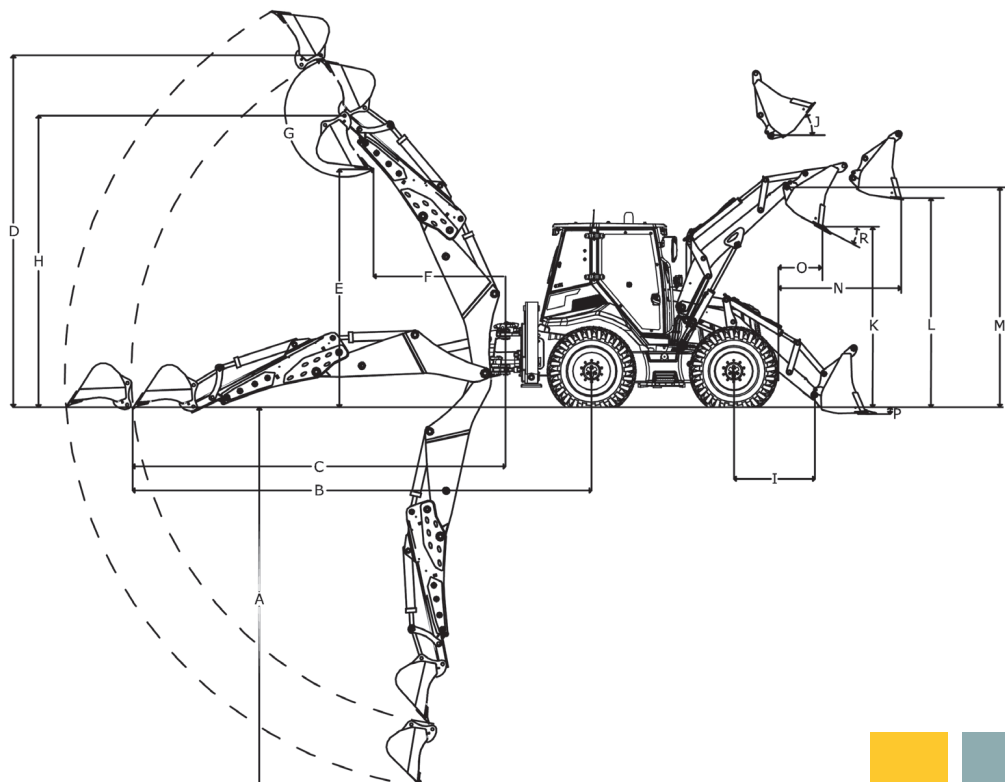


A- Overall Machine Length	6375 mm
B- Wheelbase	2223 mm
C- Backhoe Swing Centre Distance	1355 mm
D- Minimum Machine Height	385 mm
E- Cab Height	2930 mm

F- Machine Maximum Height	3880 mm
G- Machine Maximum Width	2400 mm
H- Overall Width - with Bucket	2400 mm
J- Rear Wheel Track	1950 mm
K- Front Wheel Track	1950 mm

Bachhoe Dimensions	Retracted	Extended
A- Max. Digging Depth	4600 mm	5800 mm
B- Max. Reach From Rear Axle Center	7000 mm	8100 mm
C- Max. Reach From Swing Center	5700 mm	6800 mm
D- Max. Digging Height	5600 mm	6450 mm
E- Max. Dumping Height	3850 mm	4700 mm
F- Loading Reach	1800 mm	3810 mm
G- Bucket Rotation Angle	200,4°	200,4°
H- Max Bucket Hinge pin Height	4750 mm	5550 mm

Loader Dimensions	
I- Distance Between Hinge Pin and Front Axle Center	1550 mm
J- Max. Rollback Angle, Fully Raised	59,2°
K- Dump Height	2865 mm
L - Loadover Height	3450 mm
M- Height to Hinge Pin	3590 mm
N- Max. Reach at Full Height	1620 mm
O- Dumping Reach	595 mm
P- Digging Depth	117 mm
R- Dump Angle	45°



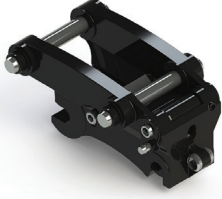
STRONG



OPTIONAL ATTACHMENTS



BACKHOE ATTACHMENTS



Quick Coupler



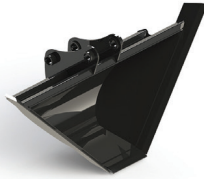
Excavator Buckets - General Purpose



Excavator Buckets - Heavy Duty



Ditch Maintenance Bucket



Tapered Ditch Buckets



Grading Buckets



Jaw Buckets



Swinger Buckets



Hydraulic Hammer



Ripper Tooth



Augers



Poly Grabs



Skelton Buckets - For Rocks

OPTIONAL ATTACHMENTS



LOADER ATTACHMENTS



Quick Coupler Loader



General Purpose Buckets



Multipurpose Buckets



Fork With Grabs



Skeleton Buckets For Rocks



Concrete Mixer Buckets



Side Dump Buckets



Sweepers



Sweepers



Haypick Bale



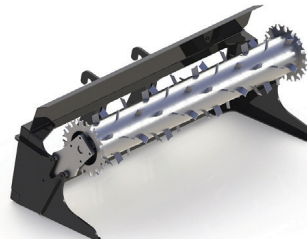
Silage Bale Clamps



Recycling Grap



Tree Spades



Rotor on Flame



Forklift Forks and Side Shifter



STANDARD / OPTIONAL EQUIPMENT



Engine System

- Air cleaner, dry type and radial seal
- Air filter condition indicator lamp
- Starting system thermal aid glow plug
- Turbocharged

Electrical System

- Backup warning alarm
- Battery, 12 V, 120 Ah
- 2 Front headlights, 4 front 4 rear working lights
- Master switch
- Visual and audible warning systems on main functions
- Warning horn

Drive Train

- Electro-hydraulic differential %100 lock
- 4 WD
- 40 km/h Transmission

ROPS/FOPS Cab

- Adjustable seat with seat belt and armrest
- Adjustable steering column
- Cab recirculating fan
- Power socket
- Front windshield washer and wiper
- Left-right side doors with locks
- Mirrors, exterior (2), interior (1)
- Rear windshield washer and wiper
- Magnetic rotating beacon (detachable)
- Steering wheel spinner knob
- Sunvisor
- Radio, Bluetooth, USB music system
- Tinted glass
- Cooling Box
- Tool box
- Cabin air filters
- USB charger

Attachments, Front Loader

- General purpose bucket
- Loader arm safety strut

Attachments, Backhoe

- Electro-hydraulic side shifting lock
- ISO pattern controls
- Swing and Boom transport lock with mechanical control from the cab
- Standard-duty bucket(600mm)
- Stabilizer safety check valves

Optional Equipment Attachments, Front Loader

- Bolton segment
- (EHSS) Electro Hydraulic Suspensions System
- Fork attachment
- Loader Quick Coupler
- Multipurpose bucket
- Hose Burst Valves
- Snow Plough Attachments
- Tipshift loader joystick

Optional Equipment Attachments, Backhoe

- Auger
- Backhoe quick coupler
- Compactor
- Different size of backhoe buckets
- Grading bucket
- Grapple
- Hydraulic hammer piping
- Hydraulic hammer
- Hose Burst Valves
- Trapezoidal Bucket
- Telescopic boom

Others Optional Equipment

- Air condition
- Fuel Pre-Heater
- Axial Piston Pump





2
YEARS
POWERTRAIN GROUP
WARRANTY

WHAM!!

Wow!!

5
YEARS
STRUCTURAL INTEGRITY
WARRANTY



ÇUKUROVA

Makina İmalat ve Ticaret A.Ş.



Çukurova Makina İmalat ve Ticaret A.Ş.
Şahin Mh. Sait Polat Blv. 322 / A 33470 Tarsus / Mersin / TÜRKİYE

+90 324 616 26 78 info@cumitas.com - www.cumitas.com